

NATHAN FOLLOWILL # KINGS OF LEON

*Rock*

**PAiSte**  
2002  
TRADE MARK  
MADE IN SWITZERLAND

IAN PRICE # DEEP PURPLE

ZUMIN KRANIC # LEVINNY KRANIC

FRANKLIN VAN DERBIJLT # LEVINNY KRANIC

GAS LIPSTICK # AMM

ET ARGENSTEIN # JONNY CHOPIN

JEREMY SPENCER # FIVE FINGER DEATH PUNCH

**ALPHA**

**PAiSte**

TOMMY PORTLAND # TONY PORTLAND

TOBIAS DANNE # TONY PORTLAND

1/2009/EU

**PAiSte** CYMBAL APPLICATION GUIDE 2009

SAM FICARINO # INTERPOL

PATRICK KEELER # THE RACONTEURS

**PAiSte**  
GIANT BEAT

SAMUEL GIEFS # MANDO DIAO

BOBBY RONINELLI # RAMBOW

NICKO MCBRAIN # IRON MAIDEN

*PAiSte*

DANNY CAREY # TOOL

STEWART COPELAND # THE POLICE

MIKKEY DEE # MOTORHEAD

PETE ELIARD # SCOTTING CAROL

JASON MCGERR # DEATH CAB FOR CUTIE

**PAiSte**  
*Twenty*

RASHID WILSON # YOUNG LEGEND

TOM MERRITT # DUFF

JOEY JORDISON # SLIPKNOT

**PAiSte**  
RUDE  
MADE IN SWITZERLAND

DAVE JONDAK # SLAYER

JORDAN BURNS # SLIPKNOT

JOHN JONKAYE # SYSTEM OF A DOWN

JUKKA NEVALAINEN # NIGHTWISH

**PAiSte**  
PAiSte SOUND TECHNOLOGY

DEAN BUTLERWORTHY # GOOD RYTHMS

JORDAN BURNS # SLIPKNOT

TIGG TORRES # PRO JON

JOHN -JR- ROBINSON # BARBRA STREISAND

*PAiSte*

STEVE JORDAN # THE VEEZ

ABE LABOREL, JR. # PAUL McCARTNEY

BERTHA ENGEL # PETER DINKOFF

Our cymbal application guide is a classification system that serves as a guideline in selecting a particular Paiste cymbal for any specific style of music that drummers or percussionists play. Whether you play Hard Rock or Big Band, our guide will help you select the ideal Paiste cymbal for you.

This system serves as a guide to advise you on selecting cymbals based on your preference of music and it should not be considered a hard rule for your cymbal selection process.

We highly recommend you to visit [www.paiste.com](http://www.paiste.com) where you can effortlessly browse through all our products - get detailed information about each model, listen to its sound, compare sounds in the Soundroom, zoom in to view the texture of each cymbal and print your own personalized Paiste catalog. Paiste.com is an endless source of online information for consumers and retailers who are eager to learn more about the company's philosophy, history and artists.

The Paiste Nation is our video and network community. Join the Paiste Nation today on [www.paiste.com](http://www.paiste.com)!

**PAISTE SWITZERLAND**  
Phone: +41-41-9393333  
Fax: +41-41-9393366

**PAISTE GERMANY**  
Phone: +49-4331-94790  
Fax: +49-4331-947932

**PAISTE USA**  
Phone: +1-714-529-2222  
Fax: +1-714-671-5869  
Toll Free: 800-4-PAISTE

4info@paiste.com  
[www.paiste.com](http://www.paiste.com)



## SIGNATURE «TRADITIONALS»

- RIDE**  
●●●● Light Ride 20"/22"  
●●●● Light Flat Ride 20"  
●●●● Medium Heavy Ride 20"
- CRASH**  
●●●● Thin Crash 16"/17"/18"
- HI-HAT**  
●●●● Medium Light Hi-Hat 14"
- CHINA**  
●●●● Medium Light Swish 20"/22"



## SIGNATURE «DARK ENERGY»

- RIDE**  
●●●● Light Dark Ride MK I 21"  
●●●● Dark Energy Ride MK I 20"/21"/22"  
●●●● Dark Energy Ride MK II 20"/21"/22"  
●●●● Dark Dry Ride MK I 21"
- CRASH**  
●●●● Dark Energy Crash MK I 16"/17"/18"/19"
- HI-HAT**  
●●●● Light Dark Hats MK I 14"  
●●●● Dark Energy Hats MK I 13"/14"
- SPLASH**  
●●●● Dark Energy Splash MK I 8"/10"



## SIGNATURE

- RIDE**  
●●●● Dry Crisp Ride 20"  
●●●● Full Ride 20"  
●●●● Dry Ride 20"  
●●●● Bright Ride 20"  
●●●● Dry Heavy Ride 20"/21"  
●●●● Dark Metal Ride 20"/22"  
●●●● Blue Bell Ride 22"
- CRASH**  
●●●● Crystal Thin 16"/18"/20"  
●●●● Mellow Crash 16"/18"  
●●●● Fast Crash 14"/15"/16"/17"/18"  
●●●● Full Crash 14"/16"/17"/18"/19"/20"  
●●●● Power Crash 16"/17"/18"/19"/20"
- HI-HAT**  
●●●● Crystal Hats 14"  
●●●● Medium Hi-Hat 14"  
●●●● Dark Crisp Hi-Hat 13"/14"  
●●●● Heavy Hi-Hat 14"  
●●●● Sound Edge Hi-Hat 13"/14"

- SPLASH**  
●●●● Splash 6"/8"/10"/12"

- CHINA**  
●●●● Thin China 16"/18"  
●●●● Heavy China 18"

- SPECIAL SOUNDS**  
●●●● Flanger Bell 12"  
●●●● Mega Cup Chime 13"  
●●●● Cool Bell 8"



## SIGNATURE «REFLECTOR»

- RIDE**  
●●●● Refl. Bell Ride 20"/22"
- CRASH**  
●●●● Refl. Full Crash 16"/18"  
●●●● Refl. Heavy Full Crash 16"/17"/18"/19"/20"/22"
- HI-HAT**  
●●●● Refl. Heavy Full Hi-Hat 14"
- SPLASH**  
●●●● Refl. Splash 8"/10"
- CHINA**  
●●●● Refl. Thin China 18"



## TWENTY

- RIDE**  
●●●● Light Ride 20"/22"  
●●●● Ride 20"/21"/22"
- CRASH**  
●●●● Thin Crash 16"/17"/18"  
●●●● Crash 16"/17"/18"/19"/20"
- HI-HAT**  
●●●● Light Hats 14"  
●●●● Hi-Hat 12"/13"/14"/15"  
●●●● Medium Light Hats 16"
- SPLASH**  
●●●● Splash 8"/10"/12"
- CHINA**  
●●●● Thin China 14"/16"/18"  
●●●● Mini China 8"/10"/12"  
●●●● China 16"/18"/20"



## 2002

- RIDE**  
●●●● Ride 20"/22"/24"  
●●●● Heavy Ride 20"/22"  
●●●● Power Ride 20"/22"  
●●●● Wild Ride 20"/22"  
●●●● Wild Crush Ride 18"/19"/20"

- CRASH**  
●●●● Thin Crash 16"/17"/18"/19"  
●●●● Crash 14"/15"/16"/17"/18"/19"/20"/22"/24"  
●●●● Medium 16"/18"/20"  
●●●● Power Crash 16"/17"/18"/19"/20"  
●●●● Wild Crash 17"/18"/19"/20"

- HI-HAT**  
●●●● Medium Hi-Hat 14"/15"  
●●●● Heavy Hi-Hat 14"  
●●●● Wild Hats 14"/15"  
●●●● Sound Edge Hi-Hat 13"/14"/15"

- SPLASH**  
●●●● Splash 8"/10"/11"/12"  
●●●● Wild Splash 10"

- CHINA**  
●●●● China Type 16"/18"/20"/22"  
●●●● Novo China Type 18"/20"  
●●●● Wild China 15"/17"/19"/21"

- SPECIAL SOUNDS**  
●●●● Accent Cymbal 4"/6"/8"  
●●●● Cup Chime 5"/5.5"/6"/6.5"/7"/7.5"/8"  
●●●● Bell Chime 6"



## GIANT BEAT

- MULTI**  
●●●● Giant Beat 18"/20"/24"
- HI-HAT**  
●●●● Hi-Hat 14"/15"



## RUDE

- RIDE**  
●●●● Ride/Crash 20"  
●●●● Power Ride 20"  
●●●● Mega Power Ride 24"

- CRASH**  
●●●● Thin Crash 16"/17"/18"/19"/20"  
●●●● Crash/Ride 16"/17"/18"/19"  
●●●● Wild Crash 17"/18"/19"/20"

- HI-HAT**  
●●●● Hi-Hat 14"  
●●●● Wild Hats 14"  
●●●● Sound Edge Hi-Hat 14"

- SPLASH**  
●●●● Splash 10"

- CHINA**  
●●●● China 18"/20"  
●●●● Novo China 18"/20"



## ALPHA

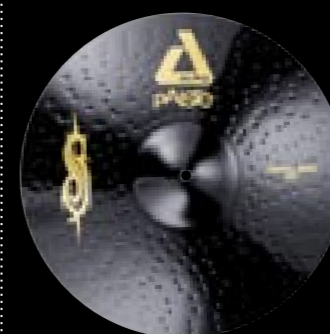
- RIDE**  
●●●● Full Ride 20"  
●●●● Groove Ride 21"  
●●●● Rock Ride 20"/22"  
●●●● Metal Ride 20"

- CRASH**  
●●●● Thin Crash 14"/16"/17"/18"  
●●●● Medium Crash 14"/16"/18"  
●●●● Rock Crash 16"/17"/18"/19"/20"

- HI-HAT**  
●●●● Medium Hats 13"/14"  
●●●● Rock Hats 14"/15"  
●●●● Sound Edge Hi-Hat 14"

- SPLASH**  
●●●● Thin Splash 8"/10"  
●●●● Metal Splash 10"/12"

- CHINA**  
●●●● Sensitive China 15"/17"  
●●●● China 14"/16"/18"  
●●●● Rock China 18"



## BLACK ALPHA «SLIPKNOT EDITION»

- RIDE**  
●●●● Metal Ride 20"

- CRASH**  
●●●● Rock Crash 17"/18"/19"

- HI-HAT**  
●●●● Sound Edge Hi-Hat 14"

- SPLASH**  
●●●● Metal Splash 10"

- CHINA**  
●●●● Rock China 18"



## PST 5

- RIDE**  
●●●● Medium Ride 20"  
●●●● Rock Ride 20"/22"

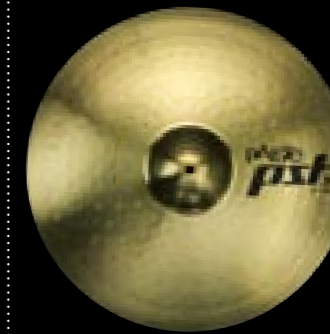
- CRASH**  
●●●● Thin Crash 14"/16"/18"  
●●●● Medium Crash 16"/17"/18"  
●●●● Rock Crash 16"/18"/19"  
●●●● Crash/Ride 18"

- HI-HAT**  
●●●● Medium Hats 13"/14"  
●●●● Rock Hats 14"

- SPLASH**  
●●●● Splash 8"/10"

- CHINA**  
●●●● Mini China 14"  
●●●● China 16"/18"

- SETS**  
Essential Set (13/18)  
Essential Set (14/18)  
Effects Pack (10/18)  
Rock Set (14/16/20)  
Universal Set (14/16/20)



## PST 3

- RIDE**  
●●●● Ride 20"

- CRASH**  
●●●● Crash 14"/16"  
●●●● Crash/Ride 18"

- HI-HAT**  
●●●● Hi-Hat 13"/14"

- SPLASH**  
●●●● Splash 10"

- CHINA**  
●●●● China 18"

- SETS**  
Essential Set (13/18)  
Essential Set (14/18)  
Effects Pack (10/18)  
Universal Set (14/16/20)

### ● ACOUSTIC LOW VOLUME

**Volume Level:** soft to medium low  
**Instrumentation:** traditional acoustic instruments  
**Rhythmic Articulation:** subtle, sparse, limited to general accents  
**Music Styles:** Folk, Traditional Blues, Early Jazz, Ethnic & Native Cultural Styles

### ● TRADITIONAL MEDIUM VOLUME

**Volume Level:** soft to medium  
**Instrumentation:** mostly acoustic instruments, prominent wind & brass instrumentation  
**Rhythmic Articulation:** refined articulation, advanced syncopated rhythms  
**Music Styles:** Big Band, Swing, Bebop, Blues, Traditional Latin Styles

### ● MODERN AMPLIFIED MEDIUM VOLUME

**Volume Level:** soft to medium loud  
**Instrumentation:** coexisting acoustic and electric instruments, prominent wind & brass instrumentation, expanded vocals  
**Rhythmic Articulation:** expressive articulation, entire range from simple to complex rhythms  
**Music Styles:** Early Rock&Roll, Fusion, Jazz-Rock, Soul, R&B, Traditional Country, Modern Latin, Reggae, Pop

### ● MODERN AMPLIFIED HIGHER VOLUME

**Volume Level:** medium to loud  
**Instrumentation:** mostly electric instruments, wind & brass instruments, prominent vocals  
**Rhythmic Articulation:** expressive articulation, entire range from simple to complex rhythms  
**Music Styles:** Rock, Funk, Modern Country, Alternative, Latin-oriented Rock Styles, Pop-Rock, Wave, Gothic

### ● MODERN AMPLIFIED EXTREME VOLUME

**Volume Level:** loud to very loud  
**Instrumentation:** dominated by electric guitars, prominent vocals, includes keyboards & synthesizers  
**Rhythmic Articulation:** powerful, energetic rhythms and accents  
**Music Styles:** Hard Rock, Metal, Punk, Grunge, Heavy Rock, Metalcore, Crossover, Prog-Rock

### ● MODERN AMPLIFIED ELECTRONIC

**Volume Level:** medium to very loud  
**Instrumentation:** dominated by synthesizers and sampling, electronic percussion  
**Rhythmic Articulation:** repetitive rhythms, complex, layered figures  
**Music Styles:** Drum&Bass, Techno, Trance, House, Dance