

Commercial Catalog



Why Acoustics?

Technical Know-How

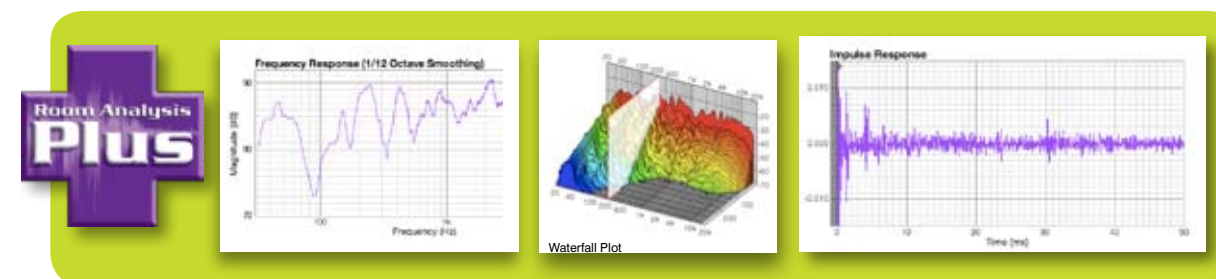
Get The Most Out Of Your Equipment — Fix The Sound Of Your Room.

You've invested time and a fair amount of money researching and purchasing top-of-the-line audio and video equipment. But, without proper acoustical treatment, you won't reap the most accurate sound from the components you've invested in. Fact is, the acoustics of your room plays a bigger role in your sound quality than any piece of equipment in the system — even the speakers!

When you're in your room, you're hearing your audio system and its interaction with the physical space. The question is, is the room contributing to the overall sound in a helpful, *or harmful*, way? Does your room complement your audio system, or does it degrade the sound? Are you getting the most out of your audio investment? Our experts can help you answer these questions so you attain the most accurate and pleasing sound possible.

Whether you're considering an upgrade to an existing audio system or designing a new one from the ground up, it is important to factor in your room's acoustical properties. Let Auralex help you determine the nature and extent of your acoustical issues and develop a treatment plan that will enhance your listening experience.

Auralex offers a **FREE Personalized Room Analysis™** service that will take your specific room conditions into account and formulate solutions that are tailored to your room, your budget and your application. In addition to the **FREE Personalized Room Analysis™**, Auralex offers fee-based enhanced services that allow us to delve even deeper into your acoustical issues.



The step up from our **FREE Personalized Room Analysis™** service is what we call the **Room Analysis Plus™** service. This service does not include a site visit; it's an off-site testing method via which you record a frequency sweep in your space with an omni-directional measurement microphone we provide in the kit. You then send us the recording so we can analyze your acoustics. We perform our computations, then provide you the frequency response, impulse response and waterfall plots for your room (see graphs above), which are invaluable data for us to use when analyzing your space and helping you choose the proper acoustical treatments.

On-site testing is also available via our **Room Analysis Pro™** service. We travel to your location, take fastidious acoustical measurements of your space and develop a detailed, in-depth report outlining our findings. This is by far the most comprehensive service we offer, and the most effective way to ensure your space sounds its absolute best.

Contact us or your authorized Auralex dealer for more information on these enhanced services.

President's Letter

I started Auralex back in 1977 with a singular purpose: to make acoustical treatments available and affordable for *everyone*, not just the super-wealthy. What began as a few product offerings has grown to a line with hundreds of items that cover virtually every sound-control need.

Whether your situation requires absorption, bass trapping, diffusion or sound isolation, Auralex has a wide range of products from which you can choose — virtually all best-in-class and many patented — in a variety of finishes and styles.

For over three decades Auralex has been the go-to company for the Fortune 500®, US government, major motion picture companies, television networks and more. Our client list includes famous recording artists from every genre, as well as top sports figures, race car drivers, voice talents and movie stars.

These notable clients trust Auralex products and expertise. You should, too.

What really sets our company apart is our degree of technical expertise and the way we make acoustics as easy and affordable as possible — regardless of budget. Time and time again, people tell us how much they like working with us.

I hope you'll allow Auralex to help you with your sound-control needs. I guarantee you'll enjoy your Auralex experience.



Eric Smith
Founder & President



Table of Contents

President's Letter	2	Why Diffusion	11
Why Acoustics Matters	3-4	pArtScience™ Products	12
ELITE™ ProPanels™	5	ISO™ Series Products.....	13
Custom ELITE™ ProPanels™ T-Coustic™ Ceiling Tiles.....	6	Construction Products	14
EcoTech™ SonoFiber™	7	Frequently Asked Questions (FAQ)	15
SonicPrint™	8		
ProBaffles™ ProBanners™	9		
ELITE™ CFS™ (Custom Fabric Systems).....	10		

FAQ This symbol signifies a Frequently Asked Question (FAQ) for a certain topic.

IMPORTANT NOTE: Unless otherwise noted, flame and absorbency data mentioned with regard to acoustical foam apply to our charcoal-colored Auralex products. The Federal Trade Commission has jurisdiction over foams and considers no existing testing method or standard regarding flammability to be an accurate indicator of the performance of cellular plastic material under actual, real-world fire conditions. Any test results listed are intended only as a barometer of the reaction characteristics of the material under very specific and controlled laboratory conditions. Any terms used in the description of our raw foam's characteristics in the lab are not intended to be a representation of Studiofoam under actual fire conditions. Always consult your local building codes before purchasing and installing any acoustical foam product regardless of vendor.

By purchasing any product from Auralex or its dealers, you agree to hold Auralex or its dealers harmless with regard to any and all claims arising from the use and/or misuse of these products, no matter how occasioned, including personal injury, fatality and loss of income, either direct, incidental or consequential. Seller's sole remedy to buyer if awarded shall be replacement of proven defective product. Specifications and prices subject to change without notice. Names and logos used are property of their respective owners and all trademarks are acknowledged. Auralex reserves the right to refuse sale to anyone it deems inappropriate for whatever reason. The laws and courts of the State of Indiana shall govern all transactions and attorney fees shall be reimbursed to seller in the event of litigation.

Entire contents © Copyright 1994, 2009 Auralex® Acoustics, Inc. All rights reserved. Names are registered trademarks or trademarks of their respective owners.

Expensive equipment, still bad sound?

FAQ 1
(see pg. 15)

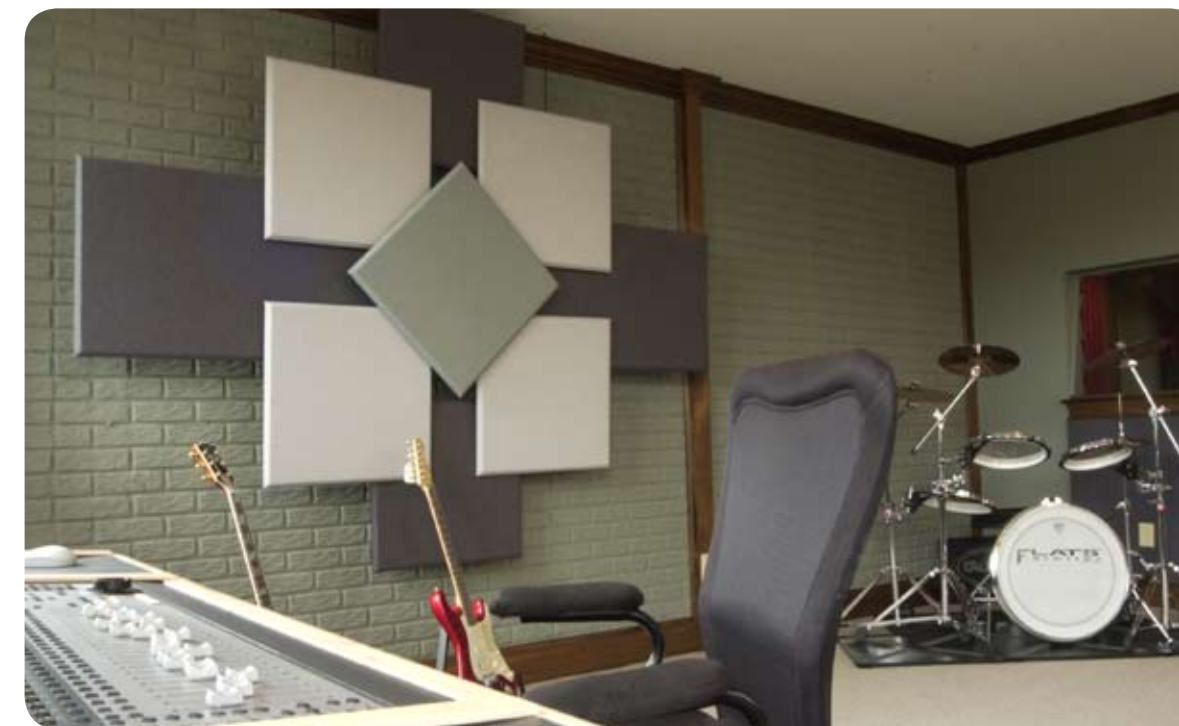
Why Absorption?

What we hear is always a combination of the direct sound source and the reflected sound from the surfaces of the room. Reflected sound travels a longer distance and arrives to our ears later than direct sound. The room's surfaces change the sound's character, thus distorting our perception of the direct sound and making it more difficult to understand speech and music. Strategically adding the proper absorptive treatments to your room improves the frequency response while allowing you to hear more of the direct sound and less of the undesirable, inaccurate, reflected energy.

How does absorption work?

Absorption results in reduced levels of the various frequencies contained in the sound that's being absorbed. The thicker the absorptive treatment, the lower in the frequency range it will affect. Low frequencies require more absorptive "muscle" than do higher frequencies. Auralex absorptive treatments will all do a good job on the upper midrange and treble frequencies, while some of our products are tailored to also provide prodigious amounts of low-frequency absorption (which is referred to as bass trapping).

Auralex has a myriad of tools at our disposal...and the expertise to help you control reflected energy in a way that optimizes the acoustical character and appearance of your room without sacrificing aesthetics. We haven't yet learned how to *break* the laws of physics, but we work every day to *bend* them.



ELiTE ProPanels are fabric-covered absorbers designed to provide an upscale, professional look and the high-end absorption qualities our top clients have come to expect from Auralex products. ELiTE ProPanels reduce unwanted room reflections, minimize slapback and control flutter echoes while affording tasteful aesthetics that complement any upscale decor. All ProPanels meet the Class A fire rating per the ASTM E84 flame test, making them the perfect choice for use in public spaces with strict fire codes. See below for our selection of stocked panels, and read more about our Custom ELiTE ProPanels on page 6.

ELiTE B22 ProPanels - B22(color)			
NRC:	Size:	Coverage:	Fabric Choices:
0.80	2' x 2' x 1"	4 ft² per panel	Sandstone, Tiger Eye, Garnet, Obsidian
Wall-mounting hardware included.			

ELiTE B24 ProPanels - B24(color)			
NRC:	Size:	Coverage:	Fabric Choices:
0.80	2' x 4' x 1"	8 ft² per panel	Sandstone, Tiger Eye, Garnet, Obsidian
Wall-mounting hardware included.			

ELiTE C24 ProPanels - C24(color)			
NRC:	Size:	Coverage:	Fabric Choices:
1.05	2' x 4' x 2"	8 ft² per panel	Sandstone or Obsidian
Wall-mounting hardware included. Tiger eye & garnet available by special order.			

ELiTE C44 ProPanels - C44(color)			
NRC:	Size:	Coverage:	Fabric Choices:
1.05	4' x 4' x 2"	16 ft² per panel	Sandstone only
Wall-mounting hardware included. Tiger eye, obsidian & garnet available by spec. order.			

Stock Fabric Colors

-  Sandstone
-  Tiger Eye
-  Garnet
-  Obsidian

Can you over-absorb a room?

FAQ 2
(see pg. 15)

Low-frequency absorption on a budget.

FAQ 3
(see pg. 15)

Custom ELiTE ProPanels™ | T-Coustic™

Auralex is a member of



EcoTech™ | SonoFiber™

Acoustical Absorbers



Custom ELiTE ProPanels can be made in any shape or size up to 4' x 12' or 5' x 10'. The thickness can be 1/2", 3/4", 1", 2", 3" or 4" to pinpoint the amount of absorption desired. Acoustical treatment does not have to be limited to square or rectangular shapes, either. Curved edges, irregular shapes and cutouts are all possibilities with Custom ELiTE ProPanels. You can also choose from a wide variety of custom fabrics to help ensure that your space looks as good as it sounds. Auralex EcoTech™ may be used as a substitute core for fiberglass, thus providing a “green” solution (see page 7 for details on EcoTech). All panels are Class A fire rated. Other options Auralex has available include tuned panels (to absorb specific frequencies), tackable surfaces and high-impact facing.

Custom ELiTE ProPanels-NRC Ratings						
Panel Thickness	0.5"	0.75"	1"	2"	3"	4"
NRC	0.55	0.70	0.80	1.05	1.10	1.15

For additional data go to <http://www.auralex.com/testdata>

T-Coustic Ceiling Tiles

Many commercially available “acoustic” ceiling tiles are actually fairly reflective at low, mid and high frequencies, so they’re not very good absorbers. To combat this common problem, Auralex now offers “green” EcoTech-based ceiling tiles that boast absorption ratings 20-45% higher than standard ceiling tiles, thus making them perfect for sound-critical spaces.



T-Coustic Ceiling Tiles 2' x 2'	
NRC:	0.70
Fire Rating:	Class A
Qty:	Minimum (4) 23 3/8" x 23 3/8" x 1" panels
Coverage:	16 ft²
Colors:	White and Black (reversible)

T-Coustic Ceiling Tiles 2' x 4'	
NRC:	0.70
Fire Rating:	Class A
Qty:	Minimum (4) 23 3/8" x 47 7/8" x 1" panels
Coverage:	32 ft²
Colors:	White and Black (reversible)



EcoTech is a revolutionary absorption material that's made from recycled polyester fibers (65% PET-recycled and 35% PET-virgin). This significantly reduces our environmental footprint compared to traditional fiberglass absorbers by decreasing our dependence on foreign oil and other non-renewable energy sources. EcoTech is also dust free, contains no formaldehyde, is hypo-allergenic, non-toxic and poses no risk of skin irritation or respiratory problems.

EcoTech is better for the environment, has comparable acoustical qualities to current alternatives, is Class A fire rated and is cost-effective. Cloth-covered EcoTech panels are available in the same sizes and fabric options as our ELiTE ProPanels.

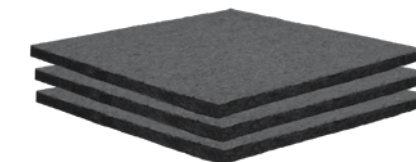
Choosing a “green” solution has never been so easy, so great-sounding or so affordable!

EcoTech	
NRC:	0.70
Flame Spread Index:	10
Smoke Developed Index:	180
Colors:	Typically fabric covered as SonicPrint, ProPanels or ELITE CFS
Panel Thickness:	1" Stock Panel (Custom thicknesses also available)



SonoFiber is a Class A fire rated recycled material that is well suited for harsh environments such as nightclubs, multi-purpose rooms and other commercial and industrial facilities where a (more costly) fabric-covered solution may not be needed. SonoFiber is perfect for lining the inside of speaker/subwoofer wall cavities, absorbing HVAC ductwork reflections and anywhere acoustical function is the top priority.

SonoFiber - SFIBERCHA	
NRC:	0.75
Flame Spread Index: 10	Smoke Developed Index: 20
Qty:	(24) 2' x 2' x 1" panels
Coverage:	96 ft²
Colors:	Charcoal Gray only
Sugg. Adhesive:	1 Foamtak or 3 Tubetak Pro (per 96 ft²)



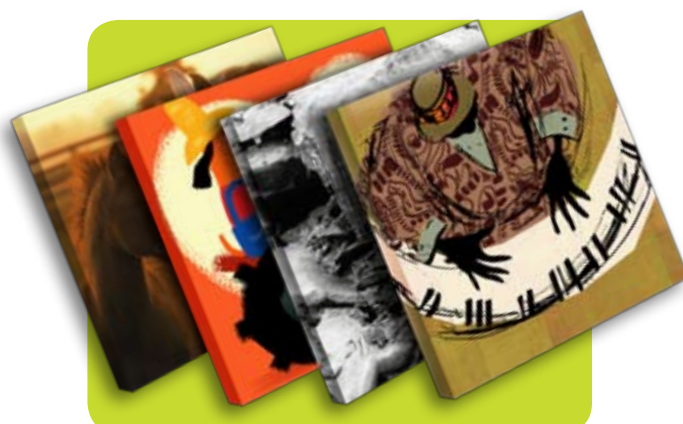
Acoustical Absorbers

What different shapes are available?

FAQ 4
(see pg. 15)

Are recycled materials more costly?

FAQ 5
(see pg. 15)

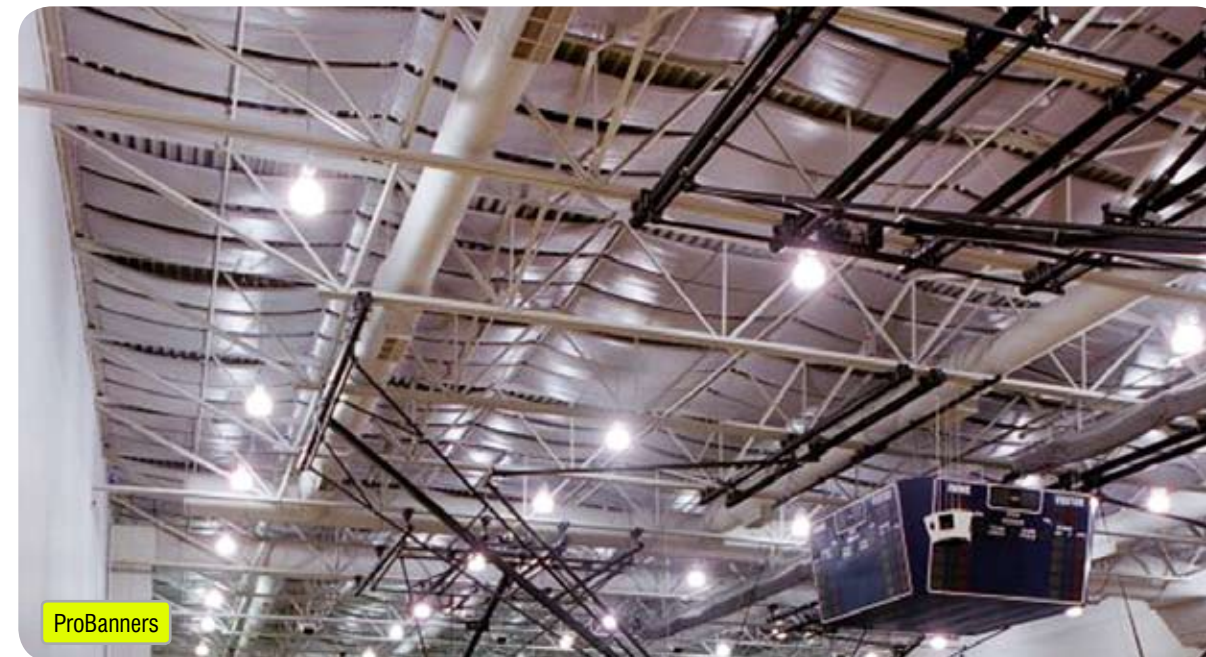


SonicPrint		
NRC:	Standard Sizes:	Covering:
0.85	2' x 2' x 1" • 2' x 3' x 1" • 2' x 4' x 1" (Custom sizes & thicknesses also available)	Fabric

SonicPrint large-scale printing is also available as an option in our fully-customized ELITE CFS installations. See page 10.

SonicPrint offers a sophisticated, artistic look via a multitude of design options that can perfectly complement any home or commercial facility. You can choose from our ever-expanding library of licensed images online at www.auralex.com/sonicprint, or even submit your own image for a truly customized appearance. SonicPrint can provide absorption in spaces not typically associated with sound control (such as dining rooms, bedrooms, doctors' offices, etc.).

Covered with a luxurious, acoustically transparent cloth, SonicPrint panels help control excessive reverberation and echo that are caused by hard, reflective surfaces like drywall, concrete, glass and wood. Strategically placed SonicPrint panels on walls and ceilings will help your space look *and* sound its absolute best. Step up to SonicPrint!

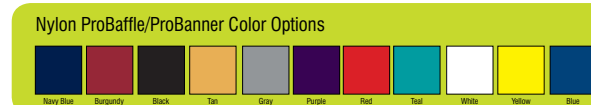


ProBaffles and ProBanners are custom-produced absorbers that provide an economical way to acoustically treat the ceiling (and, in some cases, walls) in a large room. Great for reducing reverberation and reflections in gymnasiums, arenas, pools, sanctuaries, restaurants, nightclubs and animal-care facilities, these absorption panels can be either hung vertically along the ceiling rafters (ProBaffles) or horizontally across the ceiling (ProBanners). ProBaffles and ProBanners are available in vinyl, nylon and fabric coverings in a variety of colors.

ProBaffles and ProBanners hold up in harsh environments and install quickly and easily with the supplied hardware. (Grommets are installed in the ProBaffles and painted metal washers are supplied with the ProBanners.) Both products hold a Class A fire rating per the ASTM E-84 test protocol, so they're perfect for commercial facilities. Call us today so the Auralex Application Specialists and Engineers can assist you in finding the perfect solution.

ProBanners			
NRC:	Size:	Coverage:	Covering:
1.37	2' x 4' to 4' x 25'	Varies with size	PVC; Nylon, Fabric

ProBaffles			
NRC:	Size:	Coverage:	Covering:
1.37	2' x 4' to 4' x 10'	Varies with size	PVC; Nylon; Fabric



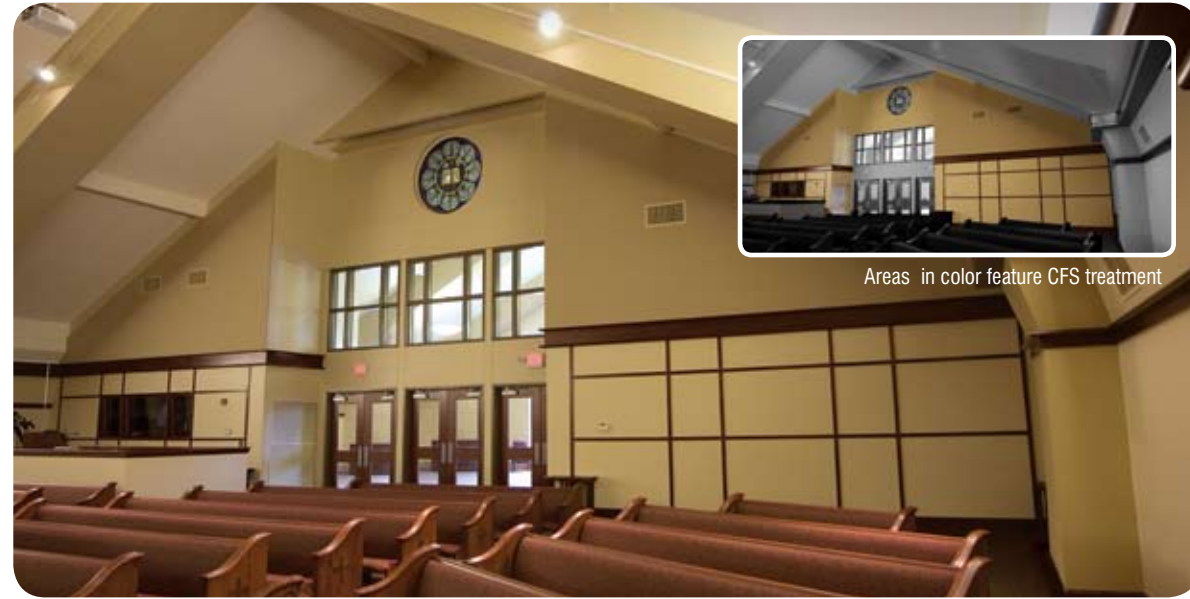
Color choices are for reference only. Actual product may vary.

ProBaffles/
ProBanners,
what is the
difference?



ELiTE™ Custom Fabric System™

Custom Solutions



A CFS SonicPrint Custom Theater with Starfield Ceiling



The **ELiTE Custom Fabric System (ELiTE CFS)** is a fully custom-engineered & installed system in which any aesthetic criteria can be realized. Auralex works directly with contractors, designers or end-users to ensure that the finished environment is the ultimate combination of acoustics *and* aesthetics. Top names in entertainment, sports, motion pictures, industry and more *love* their ELiTE CFS custom installations.

Auralex uses a specialized retention channel and customized installation process that allow us to give you exactly the look you want, but with virtual invisibility of the acoustical treatments. Final layouts and dimensions are determined on-site during installation by our certified technicians, resulting in a perfect fit & finish every time. Don't settle for a pre-fab, cookie-cutter solution for your space. Choose a *fully customized* Auralex ELiTE CFS solution you'll be proud of. ELiTE CFS is perfect for home theaters, doctors' offices, corporate boardrooms, houses of worship and anywhere style *and* great sound are equally important. Custom or stock SonicPrint imaging is also an available option for your CFS room. See page 8 or visit www.auralex.com/sonicprint to view the image selections.

Custom Options:

- Fiber Optic Starfield Ceilings
- Prosceniums
- Theatrical Curtains
- Motorized Draping
- Sound Isolation Materials

Service Included:

- Project Management
- Professional Installation
- Architectural Renderings



Can I cover walls, ceilings and speakers with CFS?

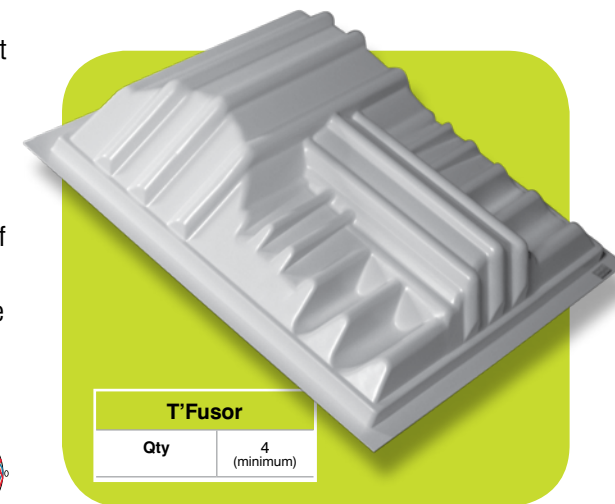
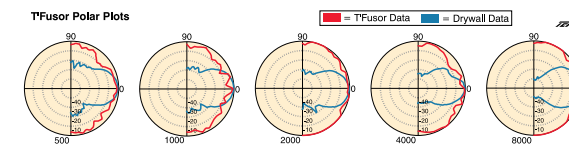
FAQ 7
(see pg. 15)

T'Fusor™ | Q'Fusor™ | MetroFusor™

Why Diffusion?

You can control sound by absorbing the energy or scattering it. Diffusion scatters sound evenly, so that harsh reflections are minimized without reducing the amount of acoustical energy in the room. Adding diffusion to a room will control sound energy without making the room sound too "dry" or "dead." Diffusors introduce surfaces of varying, scientifically-designed shapes, sizes and angles so as to evenly spread the sound in three dimensions. Diffusion isn't appropriate for all rooms, but can be an excellent tool to take acoustical control of your room without removing the acoustical character that the room exhibits.

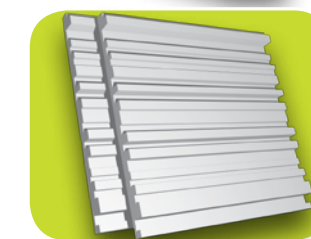
T'Fusors are made from a lightweight, high-impact thermoplastic. The distinctive geometric pattern of the T'Fusor yields phenomenal diffusion characteristics while maintaining a very affordable price. Also, the hollow cavity behind the T'Fusor can be filled with absorptive material to provide an appreciable amount of bass trapping. T'Fusors are 23¾" square, so that they can easily drop into a drop-tile ceiling grid. They can be painted to match the aesthetics of your space.



The **Q'Fusor & MetroFusor** are made from a high-density expanded polystyrene so they're cost effective and offer top-notch performance. The Q'Fusor is 21¾" square so that it can be glued to a drop-tile ceiling without covering up the gridwork. MetroFusors are a true 24" x 24" to match other products' sizes.



Q'Fusor	
Qty:	14
Dimensions:	21¾" x 21¾" x 2¾"
Fire Rating:	Class A
Sugg. Adhesive:	2 Tubetak Pro
Colors:	White (water-based paintable)



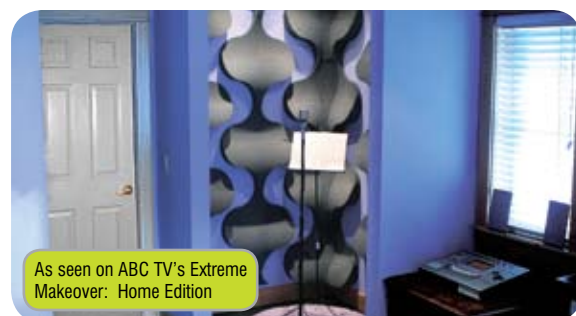
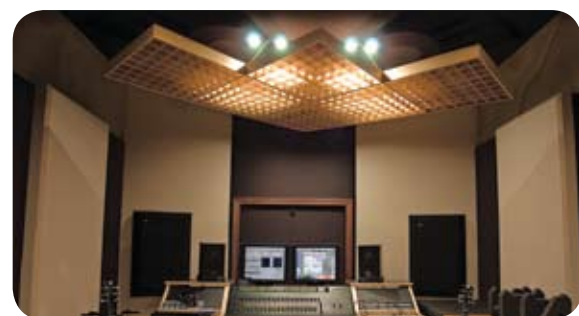
MetroFusors	
Qty:	12
Dimensions:	2' square (48 ft² per box)
Fire Rating:	Class A
Sugg. Adhesive:	2 Tubetak Pro
Colors:	White (water-based paintable)

What makes a "good" diffusor?

FAQ 8
(see pg. 15)

Acoustical Diffusors

The pArtScience product line is a family of acoustical treatments designed exclusively for Auralex by world-famous acoustician Russ Berger. They deliver exceptional performance and a custom look at an affordable price.

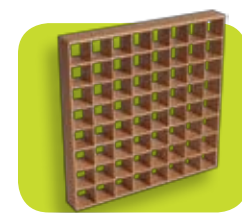


As seen on ABC TV's Extreme Makeover: Home Edition



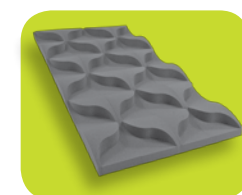
The **SpaceArray™** is a top-shelf sound diffuser that uses intricate physics and mathematics in a stunning design that's unmatched by competing brands. These diffusers are hand-crafted out of exotic Paulownia — a sought-after wood often used in the construction of expensive musical instruments — thus lending a warm sense of envelopment and controlled acoustical ambience.

SpaceArray	
Qty:	Size:
2	23¾" x 23¾" x 3"



SpaceCoupler™ When one room borrows the acoustical properties of an adjoining space, these two spaces are considered "acoustically coupled." Whether you use the SpaceCoupler to acoustically couple adjacent rooms/spaces, to optimize the effectiveness of an adjacent absorptive material or to simply scatter acoustical energy, you'll greatly benefit from this unique device. Contact our Application Specialists to learn how the SpaceCoupler can benefit *your* environment.

SpaceCoupler	
Qty:	Size:
2	23¾" x 23¾" x 3"



The **AudioTile™** provides excellent absorption and diffraction while offering hundreds of eye-catching designs that will make your room really stand out. Varying thickness built into each patent-pending AudioTile delivers excellent broadband absorption, while the design patterns afford a unique means of blending absorption, diffusion and edge diffraction for optimum acoustical balance.

AudioTile	
Qty:	Size:
1 - Box of 24 pieces or 1 - Box of 96 pieces	4 Unique Shapes

GRAMMA™ stands for Gig & Recording, Amp and Monitor, Modulation Attenuator. The patented GRAMMA isolates your amp, subwoofer or stage monitor from the floor or stage, resulting in a purity of tone that has to be heard to be believed. GRAMMA reduces resonance & improves sound isolation.



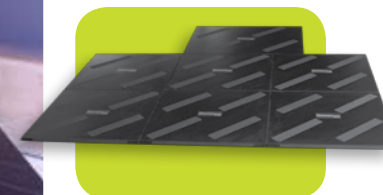
The world's most famous guitarists love their GRAMMAS! **Also available:** SubDude™ HD, featuring SonoSuede covering & smaller size.

GRAMMA	GREAT GRAMMA
Dimensions: 23" long x 15" wide x 2¾" high	Dimensions: 30" long x 19" wide x 2½" high

HoverDeck™: The coupling of drums to floors or stages creates sympathetic vibrations. These unwanted resonances can cause stage volume and feedback issues while also degrading the tone of the drums. The HoverDeck is specifically engineered to reduce coloration from floor resonance by decoupling the drum kit from the structure, yielding a tighter, more pure sound for both studio and live situations.



Available Soon: HoverDeck Lite™

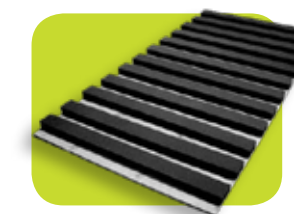


- Additional HoverDeck sections are available to custom fit any setup.
- Road case is available (sold separately) that makes the HoverDeck easy to transport.

HoverDeck	
HD-64 Gig	6' x 4' platform
HD-88 Concert	8' x 8' platform



The **PlatFoam™** kit can be used to create up to an 8' x 8' riser when combined with a particle board or MDF substrate (not supplied). A PlatFoam riser will purify the tone of whatever is resting on it while also minimizing sound transmission to neighboring spaces. PlatFoam is a fast, portable, easy and affordable solution to decoupling drums or other instruments.

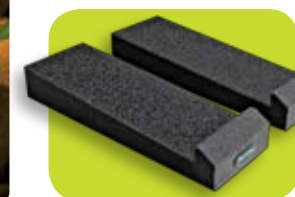


PlatFoam Strips

PlatFoam	
Qty:	Size:
1 - Box of 24	2" x 4" x 48" (includes 3 tubes of TubeTak Pro)



MoPAD™ Monitor Isolation Pads provide sonic isolation between your monitors and whatever your monitors are resting on, INSTANTLY improving the accuracy of your entire monitoring system. The patented MoPADs are affordable, easy to implement and supremely effective at decoupling monitors from your room and its contents. One set of MoPADs includes 4 pieces, enough to isolate two monitors. **Also available:** SpeakerDudes™ HD, featuring greater width.



ISO Series and concrete?

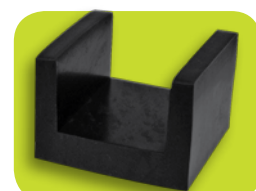


Three things happen when a sound wave strikes a surface: some of the energy is absorbed, some is reflected and some is transferred into the adjacent space. The extent to which sound is absorbed, reflected or transferred is dictated by the materials used in the construction process. Auralex offers numerous products to assist with sound isolation, and a very helpful resource — www.Acoustics101.com — that will guide you through the ins and outs of what you should (and should not) do when trying to sonically isolate a room.



Mineral Fiber: Mineral Fiber Insulation is *much* more dense than standard insulation and is specifically designed for acoustical usage, yielding better bass trapping, overall absorption, thermal characteristics, moisture absorption and isolation than any other insulation product on the market. Mineral Fiber is available in 2" and 4" thickness options. Indispensable.

Mineral Fiber		
Product	Qty	Size
2" Mineral Fiber	6	2' x 4' x 2" panels
4" Mineral Fiber	3	2' x 4' x 4" panels



U-Boats™ Floor Beam Float Channels: Made of a long-lasting EPDM rubber, U-Boats are our proprietary U-shaped channels used to support framing members and float (i.e. isolate and decouple) them from the surrounding structure. With the help of U-Boats, a floated room features greatly improved transmission loss (isolation) and better low-frequency definition within the room. U-Boats should be installed every 16" along the floor joists for best results. Elegantly simple *and* effective. Highly recommended.



RC-8™ Resilient Channel: Auralex's RC-8 is a specially-formed, sturdy metal device that, when used to hang drywall (instead of attaching the drywall directly to the studs and/or joists), greatly reduces the sound transmission of the wall or ceiling system. RC-8 should be installed horizontally at the bottom and top of your wall, then every 2' or less in between. One layer of 1/2" drywall, one layer of SheetBlok Sound Barrier and one layer of 5/8" drywall can be supported with RC-8 Resilient Channels.

RC-8 Resilient Channel	
Qty	Size
Box of 24	2 1/2" x 8' x 1/2"



SheetBlok™ and SheetBlok-Plus™: SheetBlok is a specialized dense, limp-mass vinyl material that acts as a thin sound barrier layer in walls, ceilings or floors. SheetBlok can be three times as effective at stopping low frequencies when compared to standard 1/2" drywall and is most effective when used as one component of a multi-layered construction scheme. SheetBlok is installed with a construction-grade vinyl flooring adhesive. SheetBlok-Plus offers the same great performance with an added "peel and stick" adhesive backing. Both are more effective than a sheet of solid lead.

SheetBlok and SheetBlok-Plus	
SheetBlok	4' x 10' Roll 4' x 30' Roll
SheetBlok -Plus	4' x 30' Roll (w/peel and stick backing)



StopGap™ Acoustical Sealant: Sound travels like water: any little gap is an easy place for sound to escape (or get in). StopGap Acoustical Sealant is the professional choice for filling gaps that allow sound leaks. StopGap stays pliable more than 5 times longer than other alternatives. Highly recommended.

StopGap	
Qty	Size
1	29oz Tube

FAQ 1

Upgrade Our Sound System?

Q: Our facility has changed sound systems twice in the last five years, but the room still has the same problems. Is it the sound system or the room?

A: Most often, thousands of dollars can be saved by simply addressing the acoustical issues in your space rather than trying to improve them with equipment upgrades. Improving room acoustics will undoubtedly make your sound system perform better. Save your money!

FAQ 2

Too Much Of A Good Thing?

Q: I know that a lack of treatment will cause echo and reverb in a room, but is it possible to over-absorb a room?

A: Yes. Over-absorbing the mid and high frequencies *without sufficient bass trapping* can be detrimental to speech intelligibility and sound quality. Work with Auralex to develop a treatment plan that is specific to your exact needs.

FAQ 3

I Need To Get Down...Way Down

Q: Our facility only has the budget to purchase 1" thick ProPanels, but my room really needs extra low-frequency absorption. What can I do?

A: Utilizing an air gap behind your ELITE ProPanels and other Auralex absorbers can increase the low-frequency performance by 10-15%. By suspending the panels away from the walls or ceiling using wood blocks or our ELITE Cloud Anchors you can improve the efficiency of the product & perhaps gain the extra bass trapping you need.

FAQ 4

Custom Shapes For ProPanels?

Q: Are there other options besides square or rectangular ProPanels?

A: Yes. Custom shapes and sizes are available. Any panel that is within a 4'x12' or 5'x10' size is possible. The thickness can vary from 0.5" to 4". Curved corners, trapezoid shapes, triangles, etc., are all possible. Let us customize for you!

FAQ 5

Pay A Premium To Go "Green?"

Q: In my experience, recycled materials are often more costly. Can I expect to pay more for the EcoTech panels?

A: Absolutely not. While Auralex has invested a considerable amount of time and money in the development of EcoTech, we feel that this technology is the future of acoustical treatment

and that people should not have to make the choice between their budget and the environment.

FAQ 6

Baffled About Banners

Q: What is the difference between a ProBaffle and ProBanner?

A: Banners are installed parallel to the floor/ceiling and Baffles are hung perpendicularly. Banners will assist with floor to ceiling reflections (vertical axial modes), while Baffles primarily assist by breaking up the sound energy traveling front to back or side to side within the room.

FAQ 7

Speaking Too Quietly

Q: I want to use the Custom Fabric System to cover the walls and ceiling in my room. Can I also cover up my speakers with this system?

A: It depends on the fabric that you choose. Some fabrics will yield as much as 15 or more decibels (dB) of knockdown across the frequency spectrum, significantly altering the sound quality of your speakers. Auralex has conducted extensive tests on this topic and we are available to help you select the fabric that is best suited for your project.

FAQ 8

Comparing Diffusors' Performance

Q: Are some diffusors better than others? What makes a "good" diffusor?

A: An ideal diffusor scatters sound evenly in all directions, eliminating harsh reflections and redistributing energy over a wider plane. The materials used to create a diffusor, the overall depth and the diffusor type (geometric, mathematical, etc.) will determine how effective it is. We stand by our diffusors' performance and have performed painstaking testing to verify it.

FAQ 9

Am I Dense?

Q: I understand that your ISO Series products will help significantly when used on resonant, hollow stages, but will they still be effective on concrete surfaces?

A: Indeed. Low-frequency sounds can resonate wildly through solid, dense concrete, coloring the sound of the amp, subwoofer, instrument or drum kit and helping to transmit that sound farther & worse than you might imagine. The ISO Series products improve the performance of any sound source on any type of surface. You'll love 'em and will be amazed by their effectiveness.



6853 Hillside Court, Indianapolis, IN 46250 • Tel: 317-842-2600 • 1-800-959-3343 • Fax: 317-842-2760

Famous Client List

ABC Radio Network	Fruit of the Loom Country Comfort Tour	Rockwell International
ABC TV	Full Sail Center For The Recording Arts	Roland
AT&T	General Dynamics	Rosati Acoustics
Adam Blackstone (director for Kanye and Janet)	Gibson	SGI/Silicon Graphics
Adaptac	Harman Automotive	SSL/Peter Gabriel ("Shed Of Your Dreams" at AES, NYC)
Alan Meyerson	Harpo Studios (Oprah Winfrey's Facility)	Schecter Guitar Research
Anheuser-Busch	Hitachi	Sear Sound, NYC (S. Colvin, N. Merchant, E. Clapton)
Apple Computer	Hunter Fan Company	Shure Bros.
Ardent Studios	Investor's Business Daily	Silver Dollar City, Branson, MO
Art Academy of San Francisco	Kaiser-Permanente Medical Center	Sonic Foundry
Audio Technica	Kansas City Royals Broadcasting	Sony
Audix	Klipsch	Soundscape
Azden	Kodak	Starlight International
Baldwin Pianos	Kwiz	Star Trek Voyager Television Show
Bank of America	LucasArts Entertainment Co.	Technics
Barnes & Noble, New York City	Lucent Technologies	The Discovery Channel
Barney & Friends	MPI Home Video (ABC News, Apple Records)	The Family Channel
Bell Telephone Research Labs	MTX-Soundcraftsmen	The Golf Channel
Berklee College Of Music	MUMFORD (A Lawrence Kasdan/Touchstone Film)	The Lincoln Center
Bob Hodas (acoustician)	Macromedia	The Music Bakery
Bob Kevoian (The Bob & Tom Show)	Make A Wish Foundation	The Whitney Museum Of Art
Boeing	Manley Audio Labs	3BTV
Bose	Metropolitan Museum Of Art	Tiki Town Studios
Brett Chasin	Microsoft	Time Warner Cable
Brigham Young University	Mormon Church Television	Todd-AO (Audio Post Production)
CBS Radio Network	MSNBC	Toshiba
CBS Sports	NASA (Mission Control & Kennedy Space Center)	TourDesign (concert promos & "monster truck" spots)
CBS Television's CSI	NBC Sports	Toyota
Carvin	NBC Television's "Chuck"	Transcontinental Studios (NSYNC, ABC TV's Making the Band, Backstreet Boys)
Castle Oaks Productions (Titanic, High School Musical 3, Ally McBeal, Baywatch, Etc.)	Nintendo	TrueFire
Chevron USA	Not Just Jingles (NYC) (NFL on Fox, ABC, Coke)	20th Century Fox
Cinema Video	NPR-National Public Radio	UCLA School of Music
Community Loudspeakers	Oliver Stone	US Government (Over A Dozen Agencies & Embassies)
Crawford Post	Opryland USA	Universal Audio
Denver Center For The Performing Arts	Paramount's Great America	Universal Studios
Digidesign	Pelonis Acoustics (FutureDisc, K. Loggins, Skywalker)	Vic Firth
Digital Insight	Penn State University	Walt Disney Company
Digital Sound Works (Babylon 5, Frazier, Becker, NBC, ABC)	Pioneer	Warner Bros.
Dreamworks	Polygram Records	WhisperRoom
EA Sports	Portland Trailblazers	Winnebago Industries
ESPN	Premier Percussion	Wolfgang Puck
Electroplex	Presonus	World Media Group
Ensoniq	Qualcomm	Yamaha
Event Electronics	Quarterdeck	
Extreme Makeover: Home Edition (multiple)	Rainbow America (Disney, Microsoft, Columbia Pictures)	Plus notable individuals in music, sports, movies, business and more around the world. Visit www.auralex.com/famous for an expanded list.
Fender Museum	Rock and Roll Hall of Fame and Museum	
Folded Space Technologies		
Ford Motor Company		