

▶ **BOSS** ◀
TUNER

— Stay Tuned. —

**BOSS Tuner
Lineup Catalog**



BOSS has just the right tuner for you!



BOSS tuners are beloved by musicians around the world for their reliability, accuracy, and user friendliness. Since 1983, the TU-12 has been an industry standard. Today's family of BOSS tuners melds the essence of the TU-12 with modern technology in a wide variety of models.



TU-80

P14



TU-88

P12



TU-2

P10

For All Round

Famous TU-12 features with exciting enhancements

NEW

CHROMATIC TUNER

TU-12EX

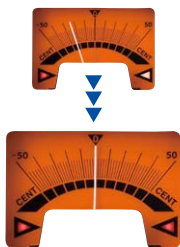


Special Feature



Accu-Pitch
Feature

Accu-Pitch provides verifies when tuning is complete

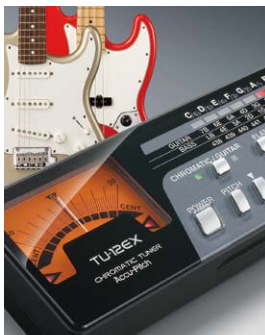


Accu-Pitch function provides audible verification when tuning is complete by generating a beep sound. This allows for accurate, quick tuning that can be verified visually via meter or audibly.



The best-selling TU-12 is a staple among musicians around the world. As the successor of the TU-12, the TU-12EX encompasses the best of the past and adds significant functional enhancements.

- Large-sized needle indicator for superb visibility plus LED tuning guide
- 23.9mm thick body for easy storage in guitar cases
- Flat Tuning of up to six half-steps below (commonly used in heavy rock genres)
- Two tuning modes: Auto Chromatic Mode (displays pitch names) and Guitar/Bass Mode (displays string number)
- Extended tuning range of E0–C8 for a variety of instruments, including guitar and bass, and useful for practicing scales
- Reference Pitch provides audible tuning comparison
- High-sensitivity internal mic provides accurate and stable tuning for acoustic instruments
- Auto-off prolongs battery life



■ TU-12EX Specifications

- Tuning Range: E0 (20.6Hz) – C8 (4,186.0Hz) • Reference Pitch: A4 (438–445Hz) • Tuning Accuracy: ± 1 cent • Power Supply: Dry battery R03 (carbon) or LR03 (alkaline); (AAA), type x 2; DC 3 V, AC adaptor DC 9V (PSA series; optional) • Current Draw 12 mA • Expected battery life under continuous use (carbon): Approximately 15 hours (This figure will vary depending on the actual conditions of use.)
- Dimensions: mm; 147.5 (W) x 54.0 (D) x 23.9 (H), inches; 5-13/16 (W) x 2-1/8 (D) x 1 (H) • Weight: 138 g, 5 oz (including batteries) • Accessories: Dry battery (R03 (AAA) type) x 2 (carbon), Soft Case

For Brass & Wind

Designed exclusively for brass and wind instruments

NEW

CHROMATIC TUNER for BRASS & WIND

TU-12BW

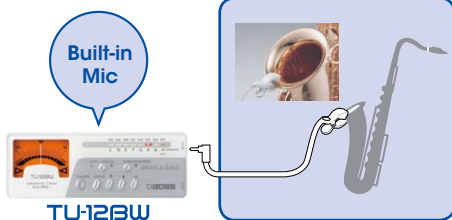


Special Feature



Contact Mic
Included

Clip-on contact mic attaches to brass and wind instruments



The clip-on contact mic attaches directly to the bell of brass and wind instruments, providing accurate tuning without interference caused by ambient sound.

Accurate tuning is fundamental in instrumental performance. The TU-12BW was optimized for use with brass and wind instruments, and benefits from BOSS's decades of world-leading tuner development.

- Large, high-visibility needle shows accurate, subtle differences in pitch
- LED tuning guide for quickly checking flatness/ sharpness
- Extended tuning range (E0–C8) for a variety of brass and wind instruments; also great for practicing scales
- Includes high-sensitivity internal mic and clip-on contact mic
- Auto Chromatic Mode automatically detects and displays pitches; Manual Mode allows users to designate destination pitch
- Reference Pitch provides audible comparison; when contact mic is used, this function allows for long-tone practice with guide pitch
- Quick Response Mode offers faster needle response for quick tuning during fast note practice
- Accu-Pitch beeps when tuning is complete
- Includes music stand attachment bracket



Holder attached to music stand



Cable can be wrapped around when not in use.

■ TU-12BW Specifications

• Tuning Range: E0 (20.6Hz) – C8 (4,186.0Hz) • Reference Pitch: A4 (438–445Hz) • Tuning Accuracy: ± 1 cent • Power Supply: Dry battery R03 (carbon) or LR03 (alkaline); (AAA) type x 2; DC 3 V AC adaptor DC 9V (PSA series; optional) • Current Draw: 12 mA • Expected battery life under continuous use (carbon): Approximately 15 hours (This figure will vary depending on the actual conditions of use.) • Dimensions: mm; 147.5 (W) x 54.0 (D) x 23.9 (H), inches; 5-13/16 (W) x 2-1/8 (D) x 1 (H) • Weight: 205 g, 8 oz (including batteries) • Accessories: Dry battery (R03 (AAA) type) x 2 (carbon), Piezo microphone, Soft Case, Holder

For Stage

Stage tuner with outstanding visibility
in dark venues and outdoors

NEW

STAGE TUNER

TU-1000



DC OUT



Super Bright
LED

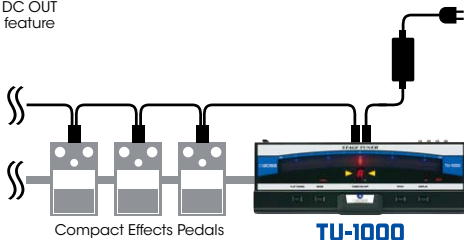


Special Feature



DC OUT
feature

Supply power to external FX
processors with
7-pin Parallel DC Cable!



Specifically designed for stage use, the TU-1000 can supply power for up to six compact effect processors via 7-pin Parallel DC cable.



Built for the stage, the TU-1000 provides accurate tuning with unparalleled brightness and ultra-smooth meter motion. Its precision and reliability is essential for performances where mistakes are unacceptable.



- Large, high-intensity LED meter, great for dark stages and outdoor gigs
- Easy user interface for hassle-free tuning
- Chromatic, Guitar, and Bass modes, plus Open Tuning Mode for DADGAD, Open D/E/G/A, Drop D tunings, etc.
- Flat Tuning support of up to six half-steps
- Fluid light motion shows when tuning is complete
- Power can be turned on/off remotely via footswitch
- Illuminated blue BOSS logo on the rear panel



■ TU-1000 Specifications

• Tuning Range: C0 (16.35Hz)–C8 (4186Hz) • Reference Pitch: A4=436–445 Hz (1Hz step) • Tuning Accuracy ± 1 cent • Power Supply: AC adaptor (Roland PSB-1U) • Current Draw: 350 mA • Dimensions: mm; 414 (W) x 160 (D) x 61 (H), inches; 16-5/16 (W) x 6-5/16 (D) x 2-7/16 (H) • Weight: 2.2 kg / 4 lbs 14 oz (excluding AC adaptor) • Accessories: AC adaptor (Roland PSB-1U), 7-pin Parallel DC Cable

For Stage

A compact BOSS tuner with a sturdy design and easy integration

CHROMATIC TUNER

TU-2



DC OUT



Super Bright LED



Special Feature



Super Bright LED

High-visibility LEDs, great for outdoor gigs or dark stages



For ease of use during live performances, the TU-2 features high-intensity LEDs and a dome-shaped panel that minimizes glare.



Perfect for stage use, the TU-2 has a standard compact-stompbox design and can be used with other effect processors. Its pedal-control capabilities allow for fast, hassle-free tuning.

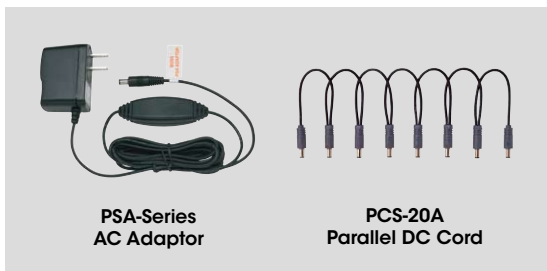
- LED meter allows users to quickly check tuning discrepancy providing accurate tuning on stage
- Two meter-display types: Cent (needle-style movement) and Stream (flow of lights indicates pitch deviation)
- Three tuning modes: Chromatic, Guitar, and Bass
- Flat Tuning support (up to a whole step down)
- Output is muted when the tuning function is on, allowing for fast, silent tuning even during live performances
- Supplies power for up to 7 BOSS compact effects

■ TU-2 Specifications

• Tuning Range: C0 (16.35 Hz) to C8 (4186 Hz) • Reference Pitch: A4 = 438 to 445 Hz (1 Hz step) • Tuning Accuracy: +/-3 cents • Power Supply: DC 9V: Dry battery (6F22/9V), AC Adaptor (PSA-Series: Optional) • Current Draw: 55 mA (Max.) Expected battery life under continuous use: Carbon: 1.5 hours (When the tuner is continuously on) 6 hours (When the tuner is on for one minute and off for three minutes), Alkaline: 6 hours (When the tuner is continuously on) These figures will vary depending on the actual conditions of use.

• Dimensions: mm; 73 (W) x 129 (D) x 59 (H), inches; 2-7/8 (W) x 5-1/8 (D) x 2-3/8 (H) • Weight: 420 g / 15 oz (including battery) • Accessories: Dry battery; 6F22/9V (Carbon)

■ Options



For Practice

3-in-one functionality: tuner, headphone amp, and metronome

NEW

MICROMONITOR & TUNER

TU-88



Available in two colors



TU-88 WH

TU-88 BK

Special Feature



Headphone Amp

Practice anytime, anywhere with headphones!



Headphones



TU-88



Guitar/Bass



Compact Effects Pedals

For verification, the TU-88 lets you monitor your instrument after passing through other effects. It's also possible to plug your guitar or bass directly into the TU-88.



Streamlined yet packed with features, the TU-88 is a must-have for guitarists and bassists. With three modes of operation (tuner, headphone amp, and metronome) you can use the TU-88 for performance and practice.

- Headphone amp, tuner, and metronome all in one
- Smooth, high-resolution needle-style LCD meter
- Three tuning modes: Chromatic, Guitar, and Bass
- Extended tuning range; supports 7-string guitar and 6-string bass as well as flat and drop tunings
- MIX IN allows connection to external music-playback devices for jamming along with favorite songs on guitar or bass via headphones
- Built-in metronome allows for private practice, with instrument and click through headphones
- Bonus features such as Accu-Pitch, Reference Pitch, and more
- Auto-off prolongs battery life
- Available in two colors: bold black or stylish white



■ TU-88 Specifications

• Tuning Range: E0 (20.6Hz) – C8 (4,186.0Hz) • Reference Pitch: A4 (435–446Hz) • Tuning Accuracy: ± 1 cent • Power Supply: Dry battery 6F22/6LR61 (9 V) type AC adaptor DC 9V (PSA series; optional) • Current Draw: 30 mA • Expected battery life under continuous use (carbon): Approximately 8 hours (This figure will vary depending on the actual conditions of use.) • Dimensions: mm; 140.0 (W) x 79.5 (D) x 30.1 (H), inches; 5-9/16 (W) x 3-3/16 (D) x 1-3/16 (H) • Weight: 190 g, 7 oz (including battery) • Accessories Dry battery 6F22 (9 V) type (carbon)

For Practice

The ultra-thin TU-80 is a tuner and metronome

TUNER & METRONOME

TU-80



Available in two colors



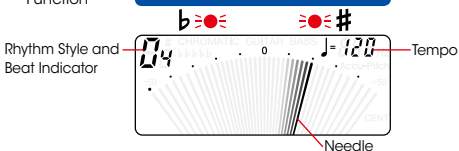
Special Feature



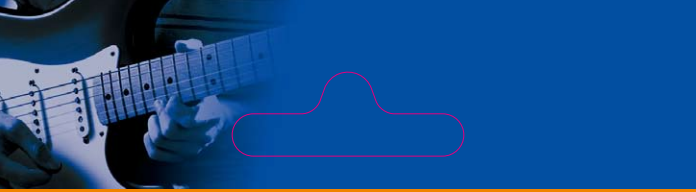
Metronome Function

A tuner and metronome in one!

Metronome Mode Screen



The TU-80's high-definition LCD simulates the smooth movement of a metronome's pendulum. Rhythmic elements, such as tempo and meter, can be verified at a glance.



With its convenient, ultra-thin body, the TU-80 fits in your pocket for easy travel. It provides accurate tuning and also functions as a metronome.

- Smooth, high-resolution needle-style LCD meter
- Three tuning modes: Chromatic, Guitar, and Bass
- Wide tuning range supports guitar and bass, orchestral instruments, vocalists, etc.
- Supports 7-string guitar and 6-string bass as well as flat tuning of up to 5-steps below
- Metronome features eight rhythm styles
- Accu-Pitch beeps when tuning is complete
- Reference Pitch provides audible comparison
- Auto-off prolongs battery life
- Available in two colors: bold black or stylish white



■ TU-80 Specifications

• Tuning Range: E0 (20.6 Hz)-C8 (4186.0 Hz) • Reference Pitch: A4=435 Hz-446 Hz (1 Hz steps) • Tuning Accuracy: ± 1 cent • Power Supply: Dry Battery (R6/LR6 (AA) Type) x 2 • Power Consumption: 3 mA (Metronome mode), 8 mA (Tuner mode and A4=440 Hz input) • Expected battery life under continuous use (Carbon): Approximately 100 hours (A4 continuous input) * These figures will vary depending on the actual conditions of use. • Dimensions: mm; 122 (W) x 68 (D) x 21 (H), inches; 4-13/16 (W) x 2-11/16 (D) x 7/8 (H) • Weight: 117 g / 5 oz (including batteries) • Accessories: Dry Battery (R6 (AA) Type) x 2



 **BOSS**®
www.bosscorp.co.jp

All specifications and appearances are subject to change.
All trademarks used in this catalog are the property of their respective companies.

Printed in Japan Mar. '09 RAM-4440 BE-3 GR-UPR-NK

