

OmniChart 36



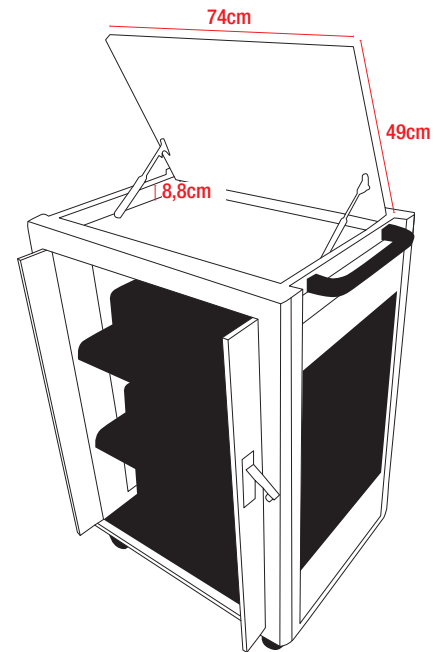
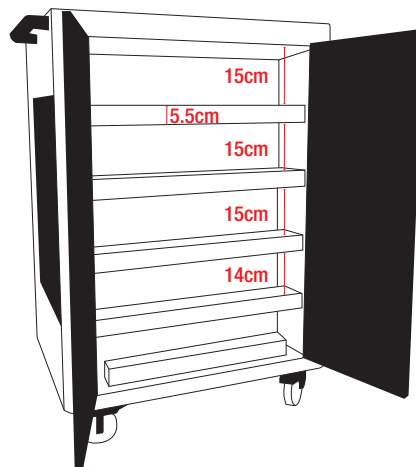
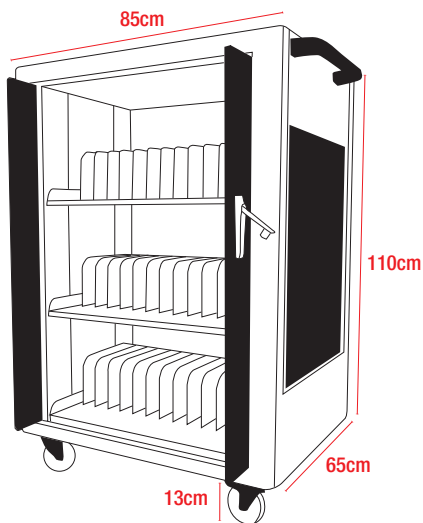
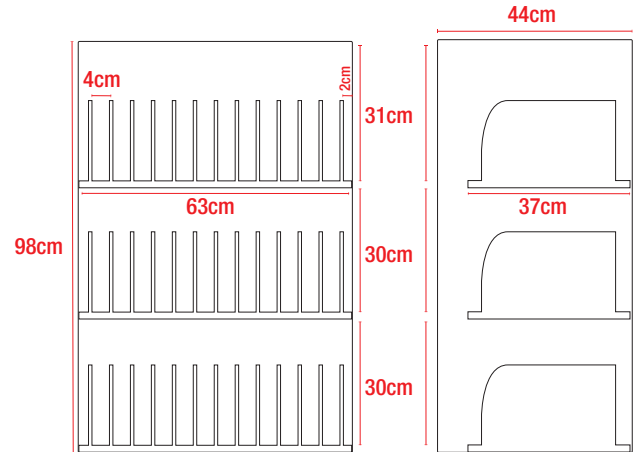
OMNICHART36

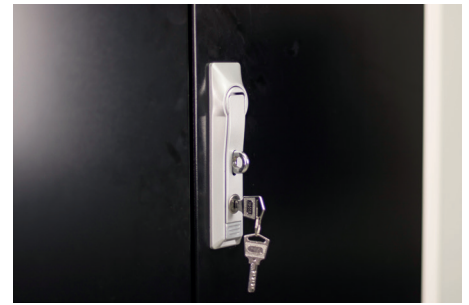
STORAGE AND RECHARGE CART

For 36 tablets, netbooks and laptops with monitor up to 15,6"
Net weight: 115kg, gross weight: 130kg.
HLGOMN36BLWH

Storage and recharge cart for laptops, netbooks and tablets

- Recharging cart for 36 devices (notebooks, tablets etc.) with monitor up 15.6".
- All-metal construction with natural circulation of air which does not require the presence of fans.
- Front compartment for housing the devices equipped with a safety lock and retractable double-doors in the unit body.
- Three fixed shelves with 12 plastic partitions with integrated cable guide for housing the devices in a vertical position and holes for the passage of the power cable in the rear compartment.
- Rear compartment for the power supplies housing, not accessible from the front compartment and equipped with a safety lock and double door.
- Four strips with 9 sockets and each compartment for transformers.
- Control unit for power setting - simultaneously on all the outlets or in timed sequence to avoid overloading.
- Upper compartment with security lock and opening / closing system with servo-assisted gas double piston and hole for the passage of the power cable to the rear of the compartment.
- Four wheels and double plastic handle for movement.
- Net weight 115kg. Gross weight: 130kg.
- One power cord 5m.
- 2 years warranty on center.

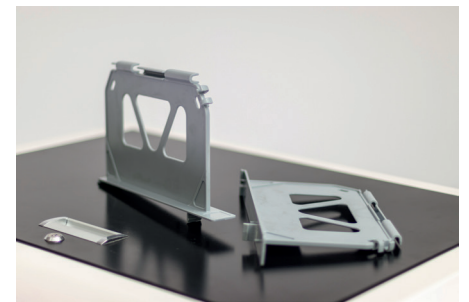
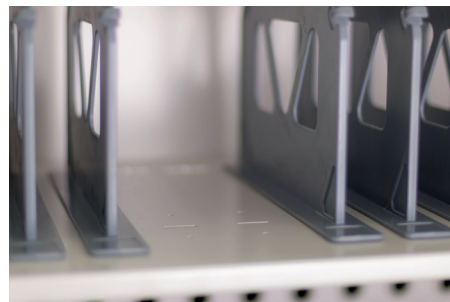




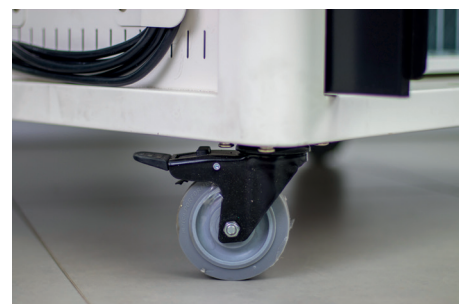
Details of the locking system of the top, front and rear compartments



Details of the rear compartment with power sockets and the power settings unit



Details of the detachable plastic partitions in the front compartment



Details of the handle, the cable 5m cable winding system and the wheels with brake



HELGI

THE DIGITAL COURTYARD

Helgi Europe
education@helgi-solutions.com
business@helgi-solutions.com
www.helgi-solutions.com