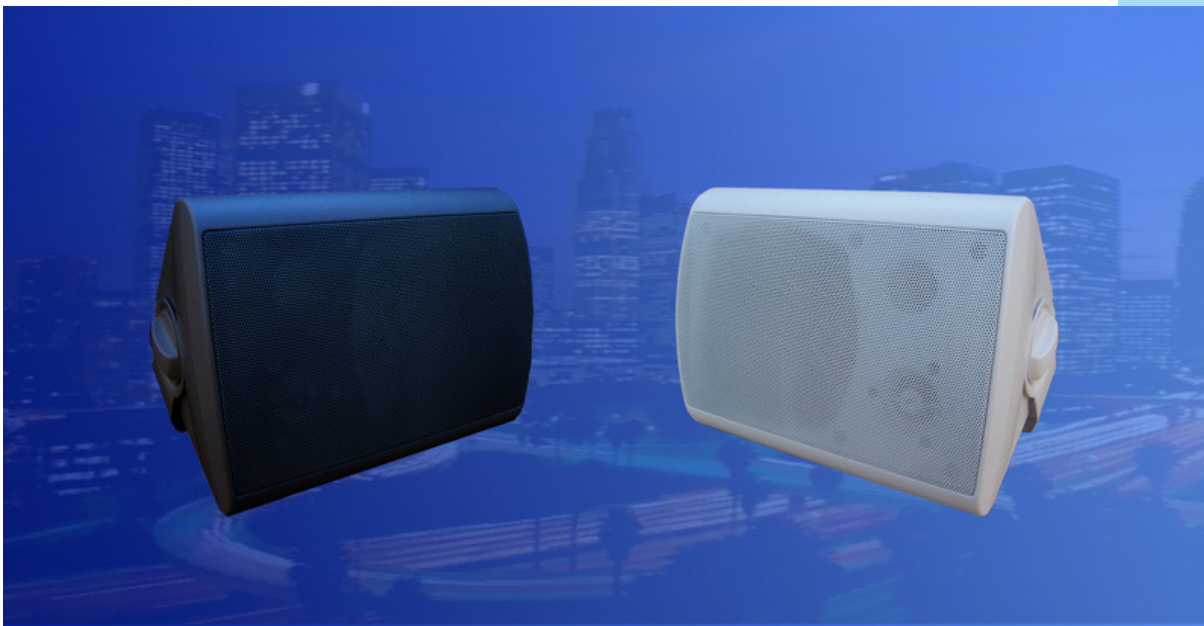


# 100-Volt-20W-Monitor-Loudspeaker **ML-200 / EN5424**



**ML  
200**

**EN  
5424**

**C  
O  
M  
P  
A  
C  
T**

**M  
O  
N  
I  
T  
O  
R**

**20W**

**10W**

**5W**

**2,5W**

- EASY/QUICK-MOUNTING THROUGH OMNI-MOUNT-BRACKET
- SPECIAL **DIN 912-ISO 4762** SCREWS
- LOW FLAMMABLE ABS-PLASTIC-MATERIAL ACC. TO EN 60695-11-20, CLASS 5VB
- **FOUR 100-V-TAPS** VIA CABLE & JUNCTION BOX
- OPTIONAL **CERAMIC-CLAMP** & **THERMO-FUSE** AVAILABLE
- QUICK-**IMPEDANCE-CHANGE** THROUGH **REAR-PANEL-ROTARY-SWITCH**
- STANDARD-COLOURS **BLACK & WHITE**

- **ML-200/EN-5424-CERTIFICATED-VERSION:  
ORDER-NUMBER:**

**ML-200/EN-5424**  
CPD-NR: 1293-CPD-0384

## TECHNICAL DATA:

## ML-200/EN5424 BLACK/WHITE

Loudspeaker:	2-Way-System
Power-Consumption:	100V-20-10-5-2,5W
Frequency-Range:	80-20 000 Hz
EN-Sensitivity 1W/4M:	72 dB
SPL 20W/4M:	85 dB
SPL 1W/1M max. EASE/Ulysses:	91 dB (6,5 kHz)
SPL 20W/1M max. EASE/Ulysses:	104 dB (6,5 kHz)
Radiation H (0,5/1/2/4kHz):	360°/335°/130°/81°
Radiation V (0,5/1/2/4kHz):	360°/317°/172°/88°
Dimensions:	220 x 160 x 140 (160) mm
Weight:	1,9 Kg
Material:	ABS-plastic-material
Colour:	black & white

