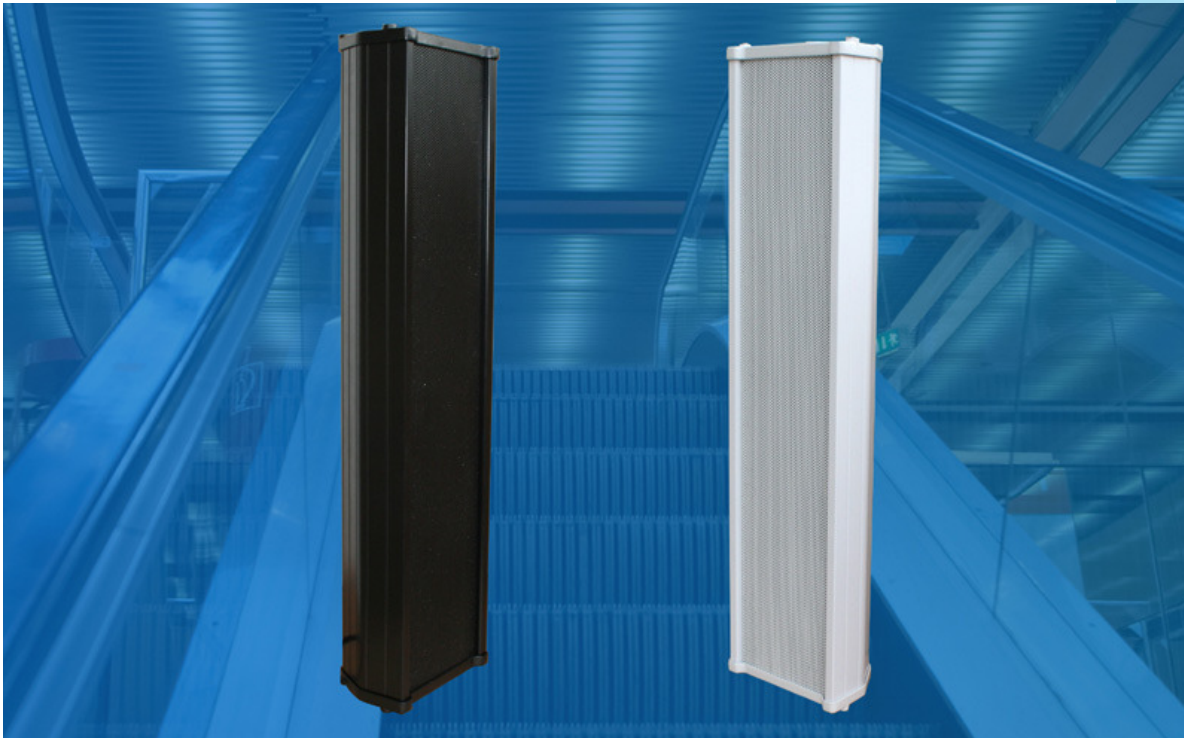


Weather-Proof-ALU-Column-Speaker CS-50-WA/EN5424



CS
50
WA
EN
5424

ALU

WEATHER
PROOF

50 W
40 W
30 W
20 W

- WEATHER-PROOF THROUGH STABLE ALUMINIUM-CASING
- ALU-GRILL & ABS-INNER-PANEL, V2A BRACKET & SCREWS
- 50-40-30-20-WATT 100-VOLT-TAPS VIA CABLE & JUNCTION BOX
- OPTIONAL CERAMIC-CLAMP & THERMO-FUSE AVAILABLE
- BALL-ATTACK-CERTIFICATED VERSION ACC. TO DIN 18032/III OBTAINABLE
- SPECIAL DIN 912-ISO 4762 SCREWS

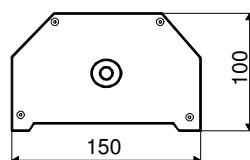
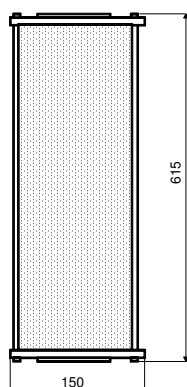
**CS-50WA/EN-5424-CERTIFICATED VERSION:
ORDER-NUMBER:**

CS-50WA/EN-5424 (TYPE-B / WEATHER-PROOF-OUTDOOR-CERTIFICATED)
CPD-NR: 1293-CPD-0300

TECHN. DATA:

CS-50WA/EN5424 WHITE & BLACK

Nominal Power:	60-Watt
Power-Consumption:	100V-50-40-30-20-Watt
Frequency-Range:	70-18000 Hz
EN-Sensitivity 1W/4M:	80,03 dB
SPL max 50W/4M:	96 dB
SPL 1W/1M max. EASE/Ulysses:	99 dB (2,6 kHz)
SPL 50W/1M max. EASE/Ulysses:	114 dB (2,6 kHz)
Radiation H (0,5/1/2/4kHz):	360°/194°/122°/79°
Radiation V (0,5/1/2/4kHz):	117°/ 49°/ 26°/13°
EN-5424-Degree:	EN-Type-B, weather-proof-outdoor-certificated
Dimensions:	615 x 150 x 100 mm
Weight:	3,9 Kg
Colour:	black & white



EN-5424-PAGE-61

