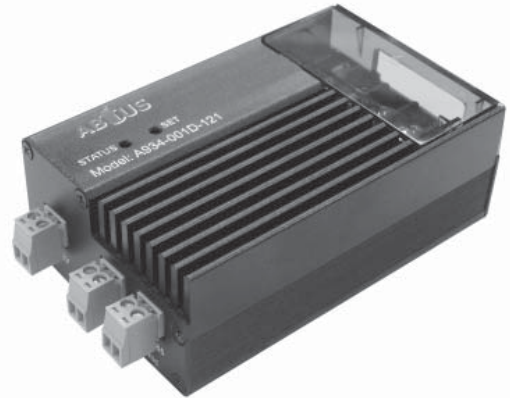


# A934-001D-121

## SINGLE PORT POWER/DIMMER CONTROL MODULE



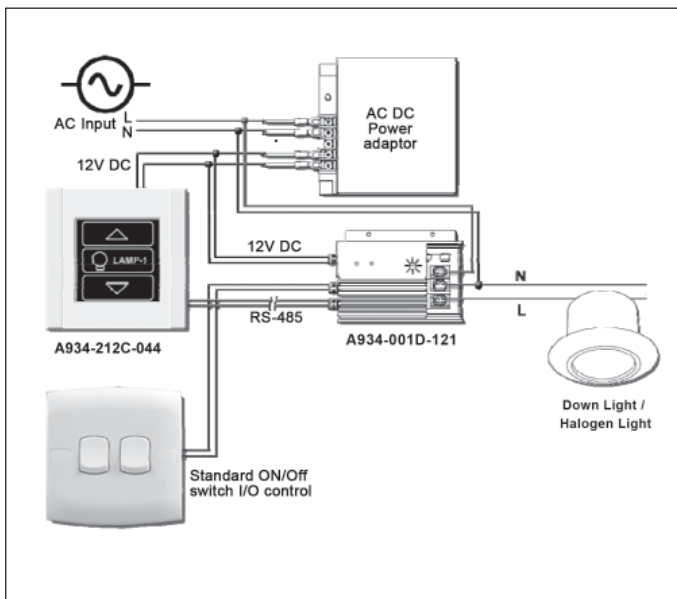
### DESCRIPTION

The ABtUS A934-001D-121 is a single power/dimmer control module that can be used to avoid all cumbersome issue of the power cabling during integration. It is versatile and can be placed anywhere within the room and is a simple and efficient Dimmer control for room lighting control.

Replacement of conventional 1 to 1 control setup to many or 1 to many controlling as well as grouping are now made possible.

### FEATURES

- Max load capacity of 600W per module
- With standard RS-485 communication protocol, compatible with any central control for all host (standard J1708 BUS)
- With I/O connectivity for integration with any existing standard wall switch
- Dimmer Ramping time (2 to 128sec)



### TYPICAL APPLICATIONS

Any professional control system requiring multiple lighting/dimming or environmental control.

- Schools (Media Classrooms) • Churches • Corporate Applications (Meeting Rooms)
- Home Automation • Home Theaters • Hotels In Room Control

### TECHNICAL SPECIFICATION

AC VOLTAGE RANGE: AC 110 ~ 240V

COM PORT: RS-485

I/O CONNECTIVITY: Dry Contact Control x 01

NUMBER OF ID: 32

DELAY TIME OFF: 2 ~ 128 sec

RELAY LOAD RATING: Max 16A@240V [\* Recommended  
Max 8 x 40 Watt Down Light]

POWER SUPPLY: 12 V DC 500mA

HOUSING: Aluminum Enclosure

DIMENSIONS: 92 x 58 x 33 mm

WEIGHT: 173.2 g

\* Specifications are subject to change without notice.

**ABtUS**