

L-VWM06A/EN(C) L-VWM06A/EN Cabinet Loudspeaker

FEATURES

- Intelligible voice and superior sound reproduction
- Robust metal enclosure
- Harmonious with all indoor decoration
- Simple power setting
- Easy installation
- Complies with EN54-24 standard
- Available with or without capacitor(part number without “C”)



PRODUCT DESCRIPTION

L-VWM06A/EN is a high-performance 6W voice alarm cabinet loudspeaker. It provides a broad frequency response range, low distortion and high sound pressure level for accurate and intelligible broadcast of evacuation messages and high quality sound reproduction. It's ideal for sound distribution in various types of

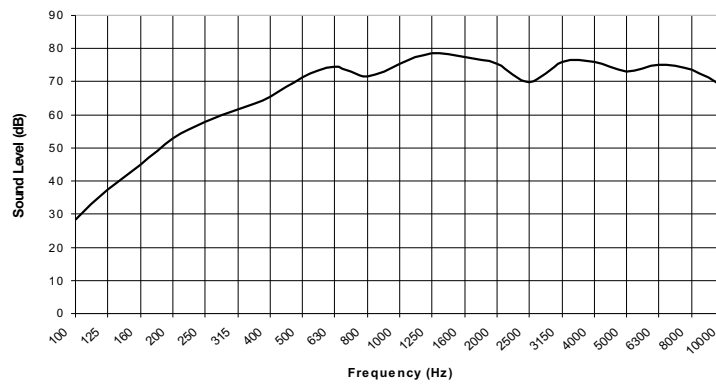
commercial buildings. Its low-profile, white color design blends easily with most interiors in locations such as hotels, conference rooms, cinemas, factories and exhibitions.

This voice alarm outdoor column loudspeaker complies with BS 5859 part 8 and EN54 part 24.

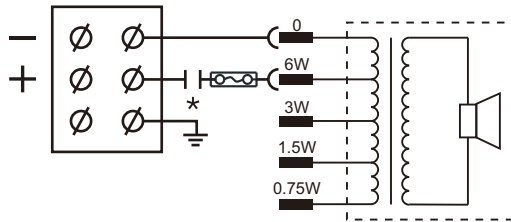
TECHNICAL SPECIFICATIONS

Model	L-VWM06A/EN(C)	L-VWM06A/EN
Max power	9 W	
Rated power	6 W	
Power tapping	6 W / 3 W / 1.5 W / 0.75 W	
Sensitivity(1W/4m,100Hz~10kHz)	79 dB	
SPL(1W/1m,100Hz~10kHz)	91 dB	
SPL(6W/4m,100Hz~10kHz)	86 dB	
Frequency response(-10 dB)	300 Hz ~ 15k Hz	
Rated input voltage	100 V / 70 V	
Rated impedance	1.7K Ω / 3.3K Ω / 6.7K Ω / 13K Ω	
Connection	Ceramic terminal	
Dimensions	170 mm x 170 mm x 63 mm	
Weight	1.56 Kg	
Color	White (RAL9003)	
Speaker size	4"	
Operating temperature	-25 °C to +55 °C	
Storage temperature	-40 °C to +70 °C	
Relative humidity	< 95 %	

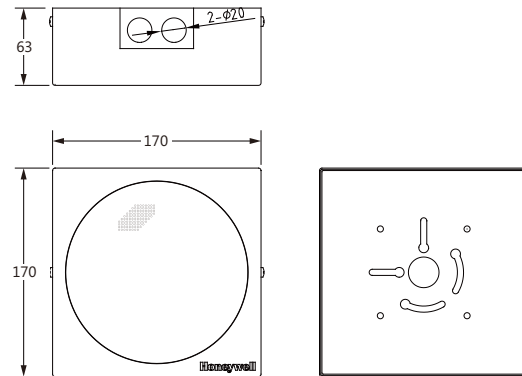
FREQUENCY RESPONSE



CIRCUIT DIAGRAM

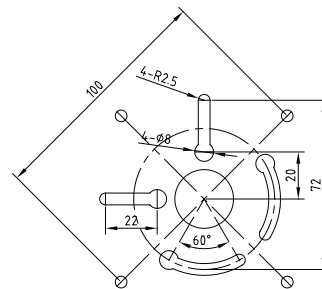


THREE-VIEW DIAGRAM



DISPERSION ANGLES

		Horizontal	Vertical
1 oct. pink noise	500 Hz	226°	226°
1 oct. pink noise	1k Hz	175°	174°
1 oct. pink noise	2k Hz	85°	88°
1 oct. pink noise	4k Hz	96°	85°



Honeywell Audiovisuals

No. 257, Junye Road
 Guangzhou GETDD East
 510530 China
 Tel: +86 20 2839 9600
 Fax: +86 20 2820 8706
 www.honeywellav.com

2100040728_EN1.0
 Nov 2012
 © 2012 Honeywell International Inc.

Honeywell